
August 11, 2010

Notice of Public Hearing

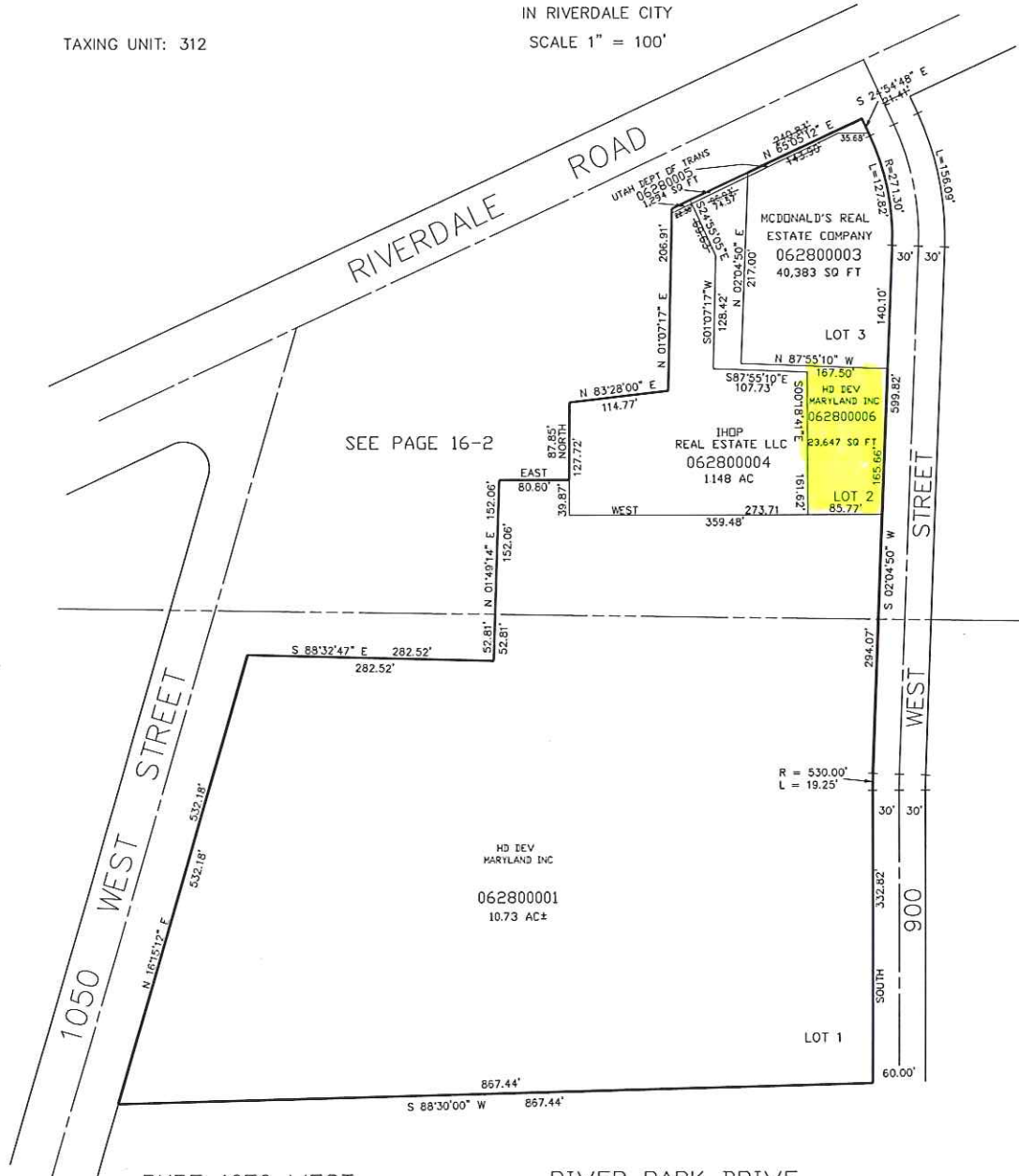
Riverdale City gives notice that on Tuesday, August 24, 2010, during the regular Planning Commission meeting, which begins at 6:30 p.m., at the Riverdale Civic Center, 4600 South Weber River Drive, Riverdale, Utah, the Riverdale City Planning Commission will hold a public hearing to receive and consider public comment regarding proposed amendments to the Riverdale City Zoning Map, specifically to rezone property located at 4707 S. 900 W. from C-3 – Regional Commercial Zone to RCP – Retail/Commercial Park Overlay Zone. A map is attached. Public Comment is invited

- The public is invited to attend all public meetings.
- In compliance with the Americans with Disabilities Act, persons who have need of special accommodations should contact the City Recorder at 394-5541.

PART OF THE S.W. 1/4 OF SEC. 7, AND THE NW 1/4 OF SEC. 18, T.5N., R.1W., S.L.B. & M.
THE HOME DEPOT INDUSTRIAL SUBDIVISION AMENDED

TAXING UNIT: 312

IN RIVERDALE CITY
 SCALE 1" = 100'



RMRE 1050 WEST
 RETAIL SUBDIVISION
 SEE BOOK 7 PAGE 581

RIVER PARK DRIVE
 SAM'S CLUB SUB
 SEE BOOK 7 PAGE 579

FOR COMPLETE ENG DATA SEE
 ORIGINAL DEDICATION PLAT IN
 BOOK 54, PAGE 91 OF RECORDS.

SEE PAGE 16-2

SEE BOOK 7 PAGE 72-2